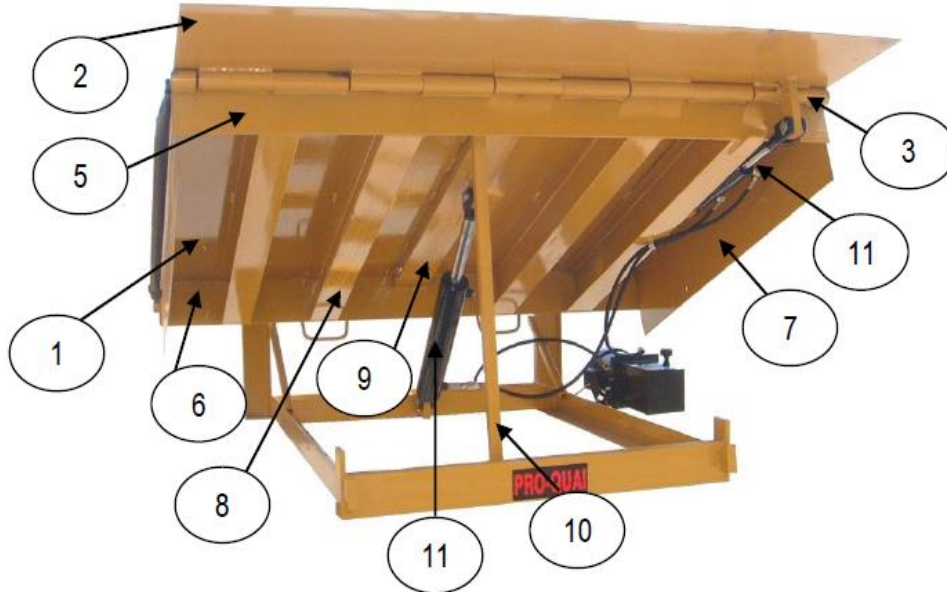




ULD7640



Technical Specifications

- | | |
|-----|--|
| 1. | Top plate: checker plate 1/4" |
| 2. | Standard lip: checker plate 5/8" x 16" |
| 3. | Front piano hinge of 2 3/8" & 1 1/4" shaft |
| 4. | Rear piano hinge of 1 5/8" & 1" shaft |
| 5. | Front support flat bar: 6" |
| 6. | Rear support flat bar: 6" |
| 7. | Standard fixed toe guard |
| 8. | 6 H-Beam 6"@9.00 lbs/ft |
| 9. | 5" central channel |
| 10. | Standard maintenance stand |
| 11. | 1 Principal cylinder with anti-drop valve
1 Double action cylinder on the lip |
| 12. | Dimension : 7' x 6' |
| 13. | Dynamic load of 40 000 lbs |

Distributor's informations

Name :

Phone :

Address :

Options

Voltage : Quantity :

Customer's informations

Name :

Phone :

Address:

Project Name

Signature

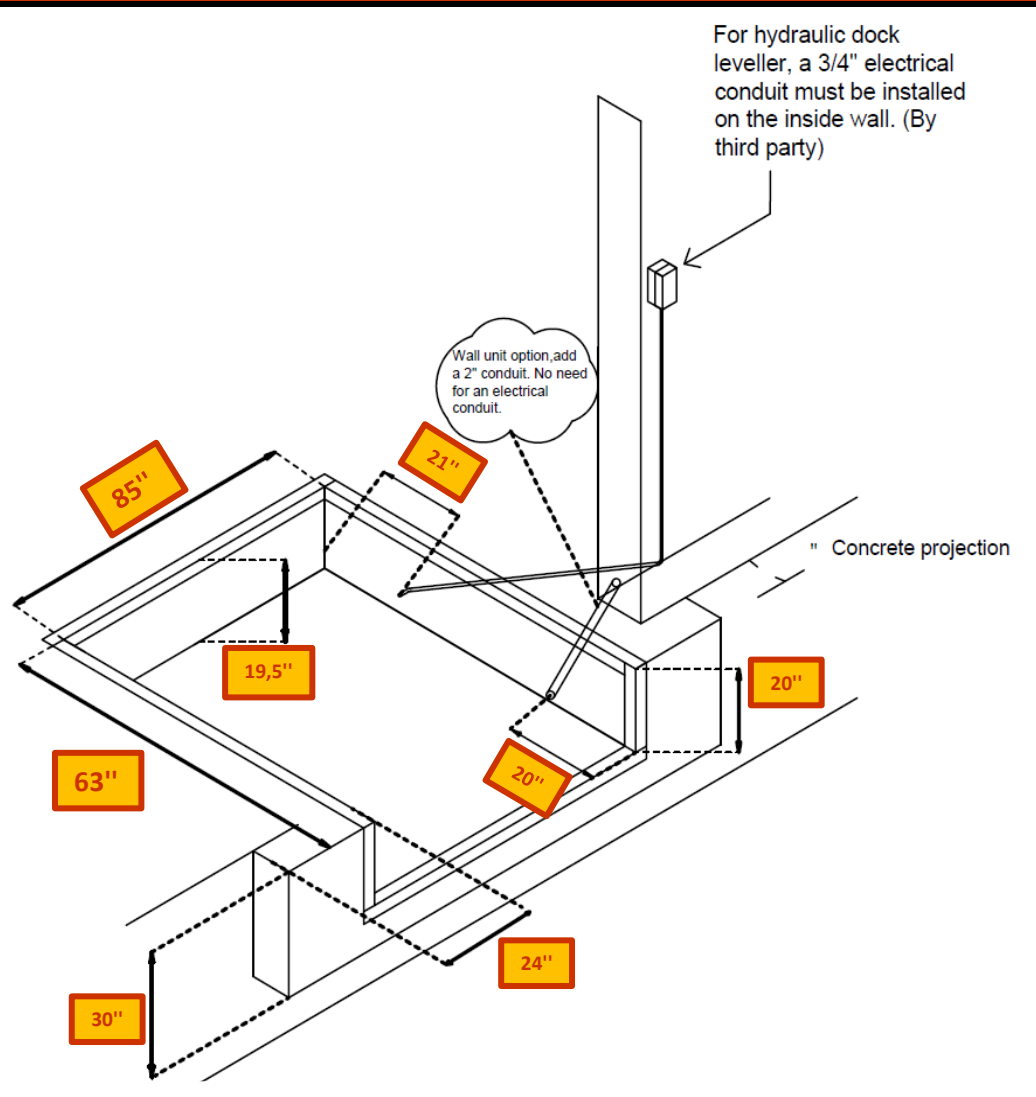
ULD7640

Nominal pit size			
Width	Length	Front height	Rear Height
7'	6'	20"	19,5"
2134 mm	1828 mm	508 mm	495 mm
Actual pit size			
Width	Length	Front height	Rear height
85"	63"	20"	19,5"
2159 mm	1600 mm	508 mm	495 mm
Curb angles dimensions			
Front width	91"	2312 mm	
Rear width	91"	2312 mm	
Length	60"	1524 mm	
Height	20"	508 mm	

When there is a downward slope towards the building, the dock leveler and the bumpers will be installed projecting outwards according to the slope's percentage.

Slope %	Concrete projection*
2%	2 1/2" 64 mm
4%	5" 127 mm
6%	7 1/2" 191 mm
8%	10" 254 mm

Projection calculated from the back of the door seal



**If truck retrain, make concrete projection until footing.